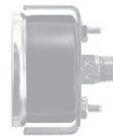




LM
Lower mount



UC
U-Clamp

GAUGES - LIQUID

2-1/2" X 1/4" MOUNT -
SS CASE / SS INTERNALS

FEATURES & APPLICATIONS:

- Used in hydraulic and pneumatic systems, compressors, regulator machine, and suitable for fluid medium or gaseous which does not clog connection port or corrode stainless steel. Can use for severe service conditions where pulsation or vibration exist. Premium quality and long life.

Case Venting: Liquid filled gauges should be vented to atmosphere to relief internal case pressure prior to use. You can easily do this by turning the valve lever on the back of the gauge to the open position. Liquid-Fill gauges are typically shipped with the valve in the closed position.

TECHNICAL DATA:

- **CASE:** Stainless Steel 316 SS
- **WINDOW:** Glass
- **INTERNAL:** Stainless Steel 304 SS
- **CONNECTION:** Stainless Steel 316 SS
- **ACCURACY:** ± 1.6% of full scale
- **TEMPERATURE RANGE:** -4°F to 140°F

ALL STAINLESS STEEL

Face Size	Mount	PSI	Part #	
			LM	UC
2-1/2"	1/4" NPT	Vacuum 0-30" Hg	G25301PSSV	G25302PSSUV
		30 psi x 30" Hg Vac	G2530301PSS	---
		15 psi / 103 kpa	G25151PSS	G25152PSSU
		30 psi / 200 kpa	G25301PSS	G25302PSSU
		60 psi / 400 kpa	G25601PSS	G25602PSSU
		100 psi / 700 kpa	G251001PSS	G251002PSSU
		160 psi / 1,100 kpa	G251601PSS	G251602PSSU
		200psi / 1,400 kpa	G252001PSS	G252002PSSU
		300 psi / 2,100 kpa	G253001PSS	G253002PSSU
		400 psi / 2,800 kpa	---	G254002PSSU
		600 psi / 4,000 kpa	G256001PSS	G256002PSSU
		1,000 psi / 7,000 kpa	G2510001PSS	G2510002PSSU
		1,500 psi / 10,000 kpa	G2515001PSS	---
		2,000 psi / 14,000 kpa	G2520001PSS	G2520002PSSU
		3,000 psi / 21,000 kpa	G2530001PSS	G2530002PSSU
		4,000 psi / 28,000 kpa	G2540001PSS	---
		5,000 psi / 35,000 kpa	G2550001PSS	G2550002PSSU
		6,000 psi / 42,000 kpa	G2560001PSS	---
10,000 psi / 70,000 kpa	G25100001PSS	G25100002PSSU		



Information contained on this page is for general information purposes only. Seal Fast Inc. assumes no responsibility for errors or omissions for this product.